

UVEO 3500 Mixed Animal X-Ray System

Reliable, high quality imaging, customized to fit your needs.

No veterinary practice is the same, that is why we have customized x-ray packages to fit your needs. Our Uveo 3500 package is perfect for vet's on the go. This portable system can do it all. With high quality images, wireless capabilities and ease of use, you can rest assured that you can rely on this system.

SYSTEM INCLUDES:

Wireless
DR Panel

Lock N
Secure

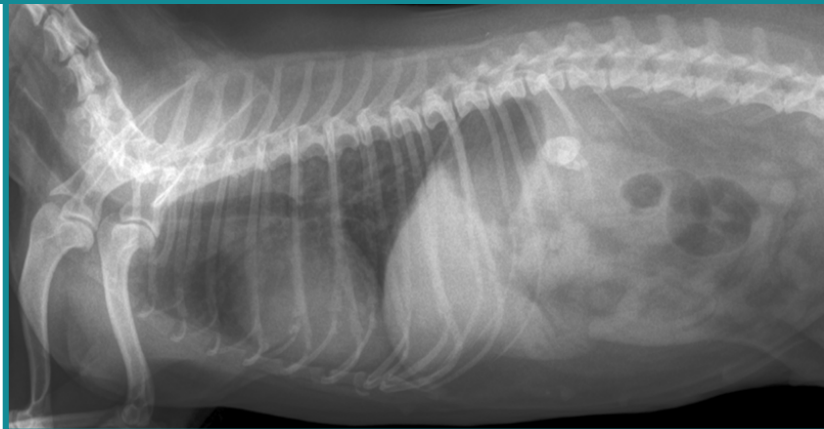
Laptop

Carry
Case

Acquisition
Software

PACS
Software





**You opened your clinic to work with patients,
not to deal with equipment.**



Image Quality
highest image quality



Installation
We install and support equipment



Reliability
don't be left stranded



Portable
Truly portable system with the easy-to-carry cordless generator



Service Guarantee
Service & support from start to finish



Durable
Water proof and impact resistant panel, installed within the table (well protected), low chance of damage

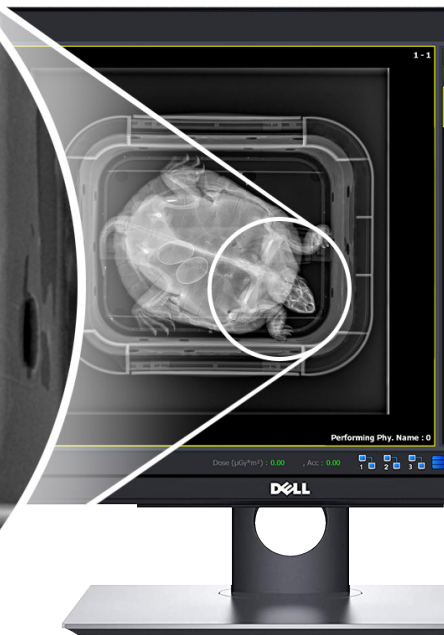


Ease of Use
Easy to use software and equipment

Specifications

DR Flat Panel Specifications:

Technology	Wireless DR (direct radiography) Flat Panel Detector
Scintillator	CsI:TI (Cesium)
Pixel pitch	140um x 140um
Pixels	2560 x 3072 pixels
Image size	14 x 17 inches (36 x 43cm)
Greyscale	16-bit
Acquisition Time	3 Seconds
Auto trigger	AED Mode (automatic exposure detection)
Interface	Gigabit Ethernet (1000BASE-T)
Dimensions	38.4 (W) x 46.0 (L) x 1.5 (D) cm
Weight	2.95kg (1 battery)
Battery	Lithium ion 3400mAh
Dust and Water Resistant	IP 67



SUPPORT AND SERVICE

Intriquip employs a team of operations staff who are specifically trained in the warranty, maintenance and repair of our x-ray systems. Physical repairs/parts replacement is a rare requirement on our x-ray equipment.

These staff are based in Regina, SK and are ready to travel at short notice anywhere in Canada as required to support our products.

ONGOING SERVICE CONTRACTS

Intriquip is pleased to offer multiple ongoing service level options to our x-ray clients.

You have the choice of an annual contract covering regular maintenance and unexpected service calls, or our service can be available on our à la carte basis when needed. Any required repair parts not covered by equipment manufacturers warranty will be additional to the service fees.

DETECTOR DROP COVERAGE/DETECTOR INSURANCE

Intriquip can offer several options for detector insurance/drop protection (drop protection only applies to wireless, portable detectors). Feel free to inquire with your sales rep to determine what protection best suits your practice.

LEASING OPTIONS

We are happy to work with various Canadian lease providers. Our reps can recommend specific lease options based on your unique requirements. Feel free to ask about these options when speaking to us!

Service and support all across Canada.

TF 800.361.3777
33 Carson Cres.

W intriquip.com
Emerald Park, SK