

## UVEO 3500 Mixed Animal X-Ray System

### Reliable, high quality imaging, customized to fit your needs.

No veterinary practice is the same, that is why we have customized x-ray packages to fit your needs. Our Uveo 3500 package is perfect for vet's on the go. This portable system can do it all. With high quality images, wireless capabilities and ease of use, you can rest assured that you can rely on this system.

### SYSTEM INCLUDES:

Wireless  
DR Panel

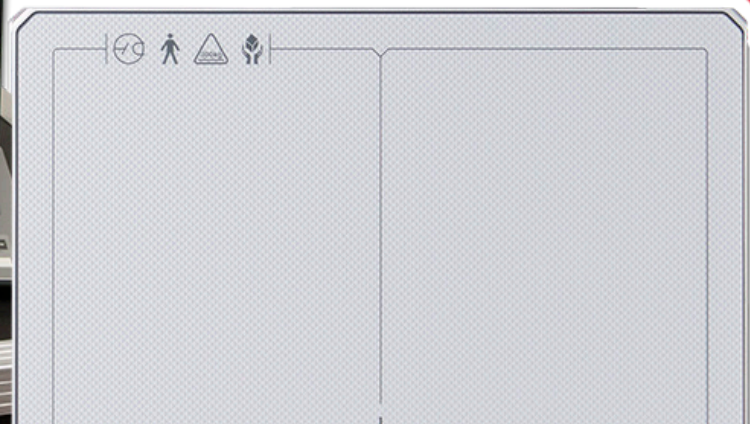
Lock N  
Secure

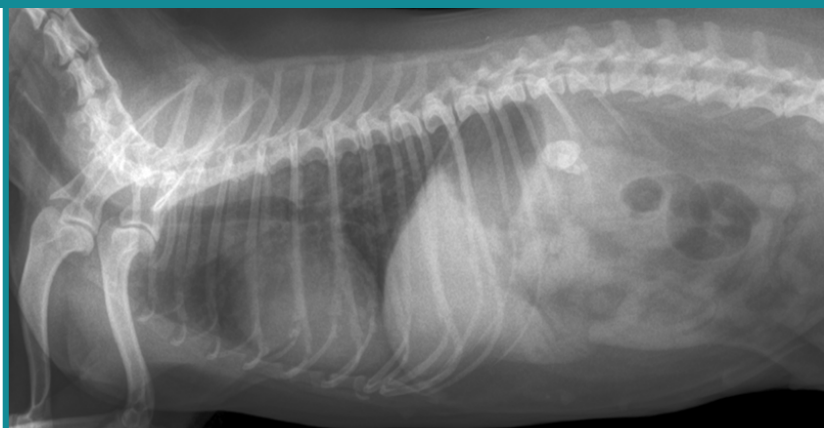
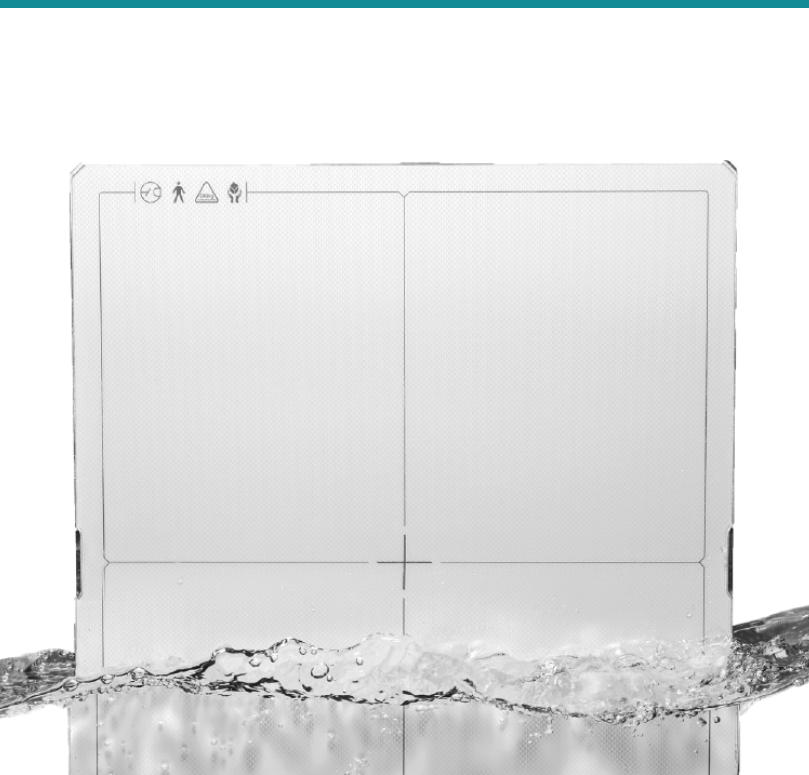
Laptop

Carry  
Case

Acquisition  
Software

PACS  
Software





**You opened your clinic to work with patients,  
not to deal with equipment.**



**Image Quality**  
highest image quality



**Installation**  
We install and support equipment



**Reliability**  
don't be left stranded



**Portable**  
Truly portable system with the easy-to-carry  
cordless generator



**Service Guarantee**  
Service & support from start to finish



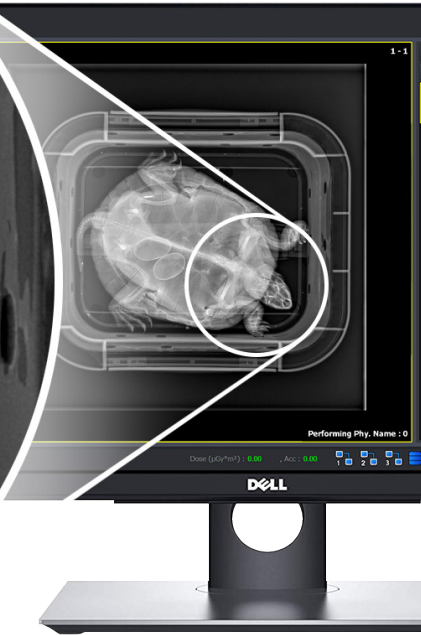
**Durable**  
Water proof and impact resistant panel,  
installed within the table (well protected),  
low chance of damage



**Ease of Use**  
Easy to use software and equipment

# Specifications

| DR Flat Panel Specifications: |  |
|-------------------------------|--|
| Technology                    | Wireless DR (direct radiography) Flat Panel Detector |
| Scintillator                  | CsI:TI (Cesium)                                      |
| Pixel pitch                   | 140um x 140um  |
| Pixels                        | 2560 x 3072 pixels                                   |
| Image size                    | 14 x 17 inches (36 x 43cm)                           |
| Greyscale                     | 16-bit   |
| Acquisition Time              | 3 Seconds  |
| Auto trigger                  | AED Mode (automatic exposure detection)              |
| Interface                     | Gigabit Ethernet (1000BASE-T)                        |
| Dimensions                    | 38.4 (W) x 46.0 (L) x 1.5 (D) cm                     |
| Weight                        | 2.95kg (1 battery)                                   |
| Battery                       | Lithium ion 3400mAh                                  |
| Dust and Water Resistant      | IP 67  |



## **SUPPORT AND SERVICE**

Intriquip employs a team of operations staff who are specifically trained in the warranty, maintenance and repair of our x-ray systems. Physical repairs/parts replacement is a rare requirement on our x-ray equipment.

These staff are based in Regina, SK and are ready to travel at short notice anywhere in Canada as required to support our products.

## **ONGOING SERVICE CONTRACTS**

Intriquip is pleased to offer multiple ongoing service level options to our x-ray clients.

You have the choice of an annual contract covering regular maintenance and unexpected service calls, or our service can be available on our à la carte basis when needed. Any required repair parts not covered by equipment manufacturers warranty will be additional to the service fees.

## **DETECTOR DROP COVERAGE/DETECTOR INSURANCE**

Intriquip can offer several options for detector insurance/drop protection (drop protection only applies to wireless, portable detectors). Feel free to inquire with your sales rep to determine what protection best suits your practice.

## **LEASING OPTIONS**

We are happy to work with various Canadian lease providers. Our reps can recommend specific lease options based on your unique requirements. Feel free to ask about these options when speaking to us!

**Service and support all across Canada.**

**TF 800.361.3777**  
**33 Carson Cres.**

**W [intriquip.com](http://intriquip.com)**  
**Emerald Park, SK**