



Powered by:
INTRIQUIP
instruments inc.

UVEO 2500 Small Animal X-Ray System

Reliable, high quality imaging, customized to fit your needs.

The Uveo 2500 Series X-ray system delivers all the great features that come with every Uveo model, plus a 4-Way float table for added mobility and the stunning image quality of a 17" x 17" Viewworks fixed-panel DR.

SYSTEM INCLUDES:

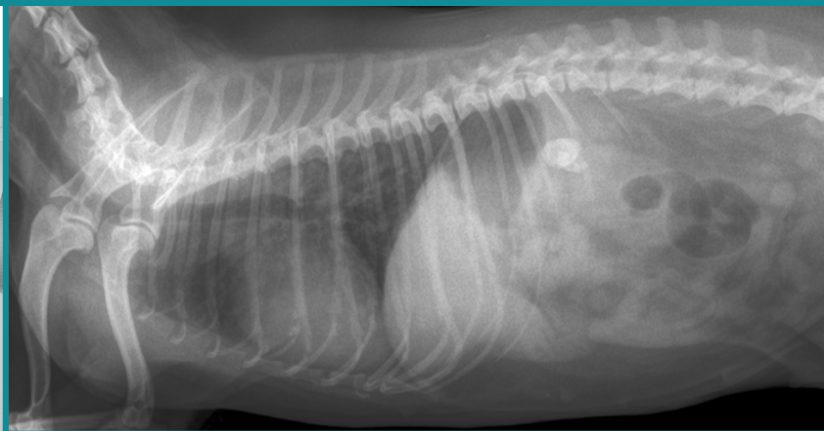
X-Ray
Detector

Desktop

4-Way
Float Table

Software





**You opened your clinic to work with patients,
not to deal with equipment.**



Image Quality
Highest image quality



Ease of Use
Easy to use software and equipment



Reliability
don't be left stranded



Installation
We install and support equipment



Service Guarantee
Service & support from start to finish



Durable
Water proof and impact resistant panel,
installed within the table (well protected),
low chance of damage

Specifications

DR Flat Panel Specifications:

Technology	a-Si (Amorphous silicon) TFT (Thin-film-transistor) with PIN diode
Scintillator	Gadolinium Oxide or CsI:TI
Pixel pitch	140um x 140um
Pixels	3072 x 3072 pixels
Image size	17 x 17 inches (36 x 36cm)
AID conversion	16-bit
Acquisition Time	2 Seconds
Auto trigger	AED Mode
Interface	Gigabit Ethernet (1000BASE-T)
Dimensions	46 (W) x 46 (L) x 1.5 (D) cm

Table Specifications:

Construction	Welded Table with 400lb load capacity and urine trap
Tube Stand	Integrated with electric locks and variable SID travels full length of table
Angulation	Angulating tube arm, angulation dial and operator handle
Locks	Electric table locks
Exposure Switch	Foot activated
Grid Cabinet	17in x 17in with tube stand interlock
X-ray tube	125kVp, 200kHU 0.6 - 1.5mm with 3" anode, 14° target, 90° horn angle
HT Cable	20 ft
Table Top	4-way float
Generator	CPI CMP200, 32kW, high frequency with anatomical programming
Console	Pedestal stand or wall mount
Generator Location	Electronics mount in base of table
Power Options	Single phase, three phase and stored energy options available



SUPPORT AND SERVICE

Intriquip employs a team of operations staff who are specifically trained in the warranty, maintenance and repair of our x-ray systems. Physical repairs/parts replacement is a rare requirement on our x-ray equipment.

These staff are based in Regina, SK and are ready to travel at short notice anywhere in Canada as required to support our products.

ONGOING SERVICE CONTRACTS

Intriquip is pleased to offer multiple ongoing service level options to our x-ray clients.

You have the choice of an annual contract covering regular maintenance and unexpected service calls, or our service can be available on our à la carte basis when needed. Any required repair parts not covered by equipment manufacturers warranty will be additional to the service fees.

DETECTOR DROP COVERAGE/DETECTOR INSURANCE

Intriquip can offer several options for detector insurance/drop protection (drop protection only applies to wireless, portable detectors). Feel free to inquire with your sales rep to determine what protection best suits your practice.

LEASING OPTIONS

We are happy to work with various Canadian lease providers. Our reps can recommend specific lease options based on your unique requirements. Feel free to ask about these options when speaking to us!

Service and support all across Canada.

TF 800.361.3777
33 Carson Cres.

W intriquip.com
Emerald Park, SK