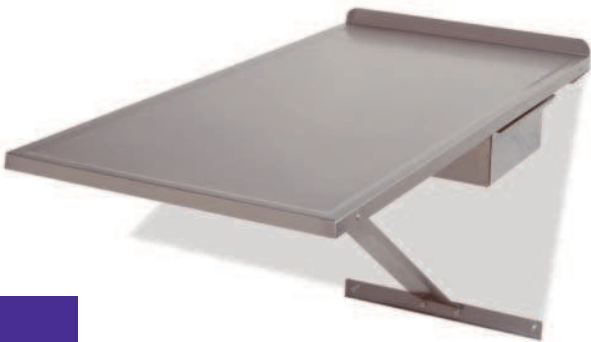


## Classic Wall-Mounted Exam Tables

### Classic Longitudinal Wall-Mounted Exam Table

Made of stainless steel, this Table extends out from wall to provide a two-sided work surface with plenty of leg room. Rigid frame and a support bracket mount table securely to wall. Backsplash prevents fluids and debris from getting trapped between the wall and table. Melamine-finished underside repels moisture for easy care and long life. Storage drawer opens from either side to keep supplies close at hand.



P/N	DESCRIPTION	DIMENSIONS	
		In.	Cm
12570-00-GZAADG	Wall-Mount Exam Table	45.247W x 21.307D	114.93W x 54.12D

### Classic Lateral Wall-Mounted Exam Table

A great space-saver, this table allows you to use the wall to help steady and control your patient. It's also useful as a prep table in treatment areas of your facility. Rigid stainless steel frame and support brackets mount table securely to wall. Backsplash prevents fluids and debris from getting trapped between the wall and table. Melamine-finished underside repels moisture for easy care and long life. Storage drawer keeps supplies close at hand.



P/N	DESCRIPTION	DIMENSIONS	
		In.	Cm
12571-00-IUAADG	Lateral Exam Table	57.245W x 21.247D	145.40W x 53.97D

### Classic Folding Longitudinal Wall-Mounted Exam Table

This versatile table is the ideal solution in confined spaces where an extra work surface is needed. It quickly folds up out of the way against the wall when not in use. Extends less than 5-in. (12.70cm) from the wall when folded. Easy-to-use lock/release handle lets you lower the table when needed, locks table in either extended or folded position for safety. Rigid stainless steel frame mount table securely to wall. Melamine-finished underside repels moisture for easy care and long life.



P/N	DESCRIPTION	DIMENSIONS	
		In.	Cm
12572-00-GZAADG	Folding Wall-Mount Exam Table	45.247W x 21.284D	114.93W x 54.06D