

Aohua Endoscopy

Aohua Endoscopy Co., Ltd. was originally incorporated in 1994, a globally-renowned medical endoscope manufacturing company with products consisting of video endoscopy system, endoscopy peripheral equipment, endoscopic diagnosis and treatment device etc. And sales network covering more than 80 countries and regions in the world. Our mission is to take the lead of endoscope technology innovation and push forward the technological progress of endoscopic diagnosis and treatment technology. We will proactively and constantly serve the cause of human health.

To date, more than 10,000 hospitals around the world are using Aohua endoscopy equipment. It is precisely because of the existence of Aohua who is providing abundant, easy to use and affordable endoscopic products and services that thousands of hospitals can carry out endoscopic diagnosis and treatment services. Aohua now provides end-to-end solution and service to end-users with digestive endoscopy equipment, endoscopic diagnosis and treatment consumables, surgical endoscopy products and peripheral devices.



Mumbai, India

Tel: +86-21-6768-1018
Address: A-604, Miital commercial, Hasan pada road, Near marol naka metro station, Andheri (East), Mumbai

Munich, Germany

Tel: +49(0)81 04/8908-10
Address: Fichtenstrasse 27, Brunthal, - Munich, Germany

Moscow, Russia

Tel: +7(495)988-00-86
Address: Office 210, Building 27, Prospect Mira 102, Moscow, Russia

AOHUA

Aohua Endoscopy Co., Ltd.
Location: NO.660 Shengang Road, Songjiang District, Shanghai, 201612, P.R.China
Postcode: 201612
Fax: +86-21-67681013
Tel: +86-4009-210-114

www.aohua.com/vet.en

 **CE 0197**
ISO 9001/ISO 13485 Certified

AOHUA



Veterinary Endoscope Catalogue

VET-OR1200 series

VETERINARY ENDOSCOPE CATALOGUE



VET-OR1200HD Imaging Processor

Observation	Video Signal Outputs	Y/C, DVI, AV	Observation	Freeze/Back	HD images can be frozen, saved and reviewed	
	Image Enhancement	profile enhance, 0-3 steps		Power	Voltage	~110V/220V AC (±10%)
	Brightness Adjustment	9 steps			Frequency	50Hz/60Hz
	IRIS	Average, Peak		Air pump	Air flow	≥5L/min
	AGC	Electronic emphasis on mucosal morphology or outline to enhances the sharpness of the endoscopic image			Air pressure	30-80kPa
	W.B	Press the switch W.B to achieve the white balance adjustment		Lighting	Bulb	LED
	Photo/ Record	HD images / video can be saved			Colour temperature	≥5500K

Other Image Processors

VET-1200R: Compatible with Sony camera head

VET-1200Li: Built-in lithium battery, can be widely used for different locations.

VET-1200RH: Compatible with HD camera head.

Tips: All the flexible endoscopy parts of the VET-1200 series image processors are consistent.

VET-OR1200R & VET-OR1200RH Compatible with OTV

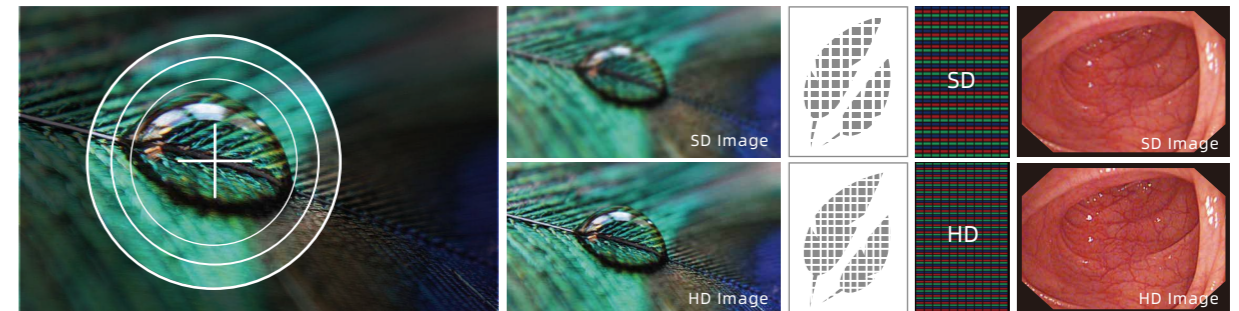
AOHUA VET-OR1200R & VET-OR1200RH are based on the newest digital technology. With optionally available camera head, which can be connected to flexible endoscopes or rigid endoscopes.



HD image

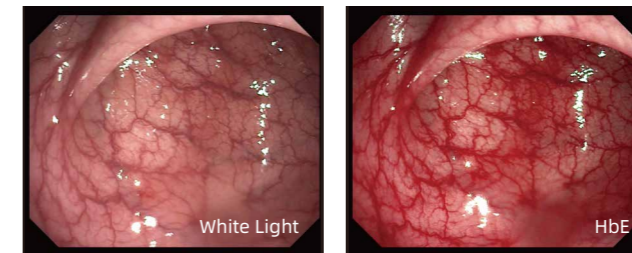
Megapixel Display HD display, true representation

High-definition image display, more details, clearly looking into any subtle changes before the eyes.



(HbE) Hemoglobin Enhancement

The powerful upgraded HbE function can better highlight the hemoglobin in the blood and has obvious invigorating effect on the possible blood-flow direction in the diseased tissue.



USB Function

The USB interface can be used to store video and still images using U disk.

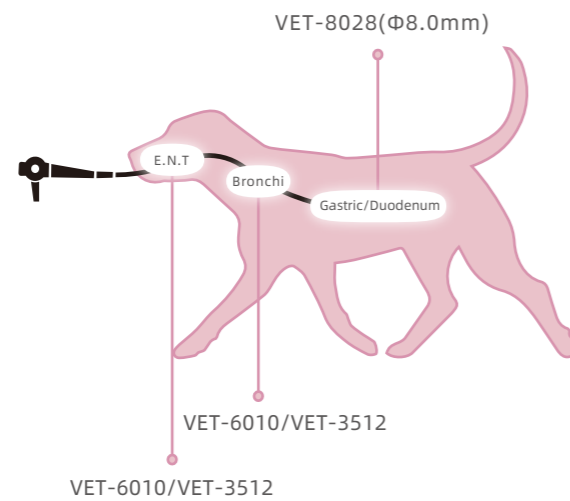


Veterinary Endoscopes Companion Animal

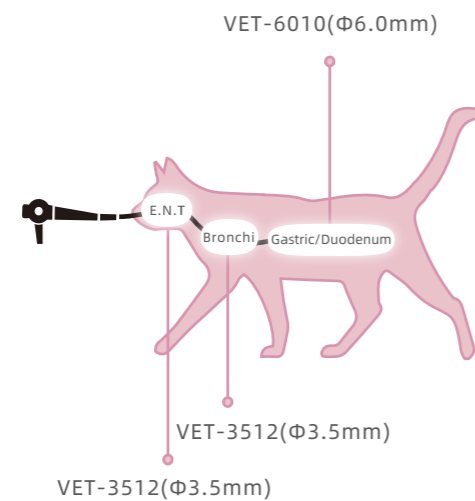
With the extended length and sleek design, Aohua multipurpose veterinary endoscopes are ideal for numerous companion animal applications.

Upper and lower gastrointestinal endoscopy is perhaps the most widely indicated application of endoscopy in companion animals. A partial list of indications includes regurgitation, dysphagia, salivation, nausea, vomiting, hematemesis, melena, anorexia, diarrhea, weight loss, hematochezia, fecal mucus and tenesmus.

Canine



Feline



VET-8028

Working length	1500 mm
Diameter of distal-end	8.0 mm
Diameter of instrument channel	2.8 mm
Range of bending	U210°D90° R/L100°



VET-6010

Working length	1000 mm
Diameter of distal-end	6.0 mm
Diameter of instrument channel	2.2 mm
Range of bending	U210°D90° R/L100°



AOHUA VET-3512 has a broad range of applications including ear, nose, throat, urinary tract and bladder amongst others. The video bronchoscope is the perfect solution for surgery or diagnosis.

VET-3512

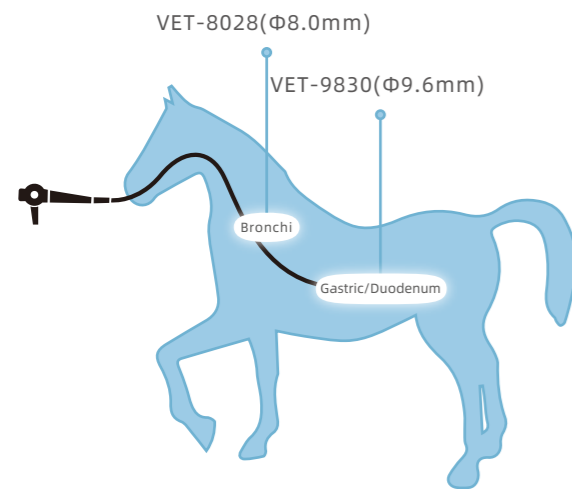
Working length	600 mm
Diameter of distal-end	3.5 mm
Diameter of instrument channel	1.2 mm
Range of bending	U160°D130°



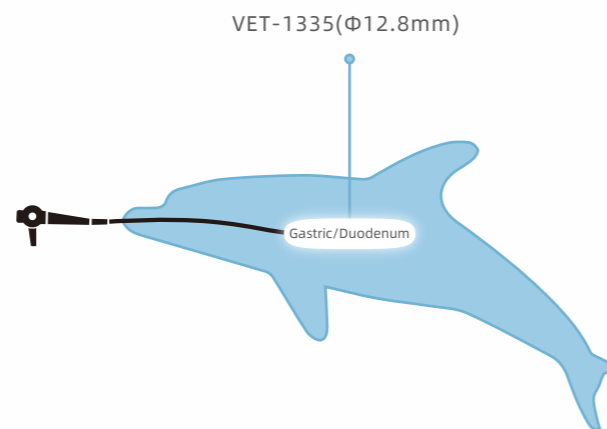
Large Animal Video Endoscopes

With the extended length and sleek design, Aohua multipurpose veterinary endoscopes are ideal for numerous large animal applications, including: Gastroscopy, Esophagoscopy, Tracheoscopy, Rhinoscopy, Pharyngoscopy and Laryngoscopy. Large working channel facilitates bigger biopsies to ensure a more accurate diagnosis. Uniform image brightness, even under difficult lighting conditions.

Equine



Dolphins



VET-9830

Working length	3000 mm
Diameter of distal-end	9.6 mm
Diameter of instrument channel	2.8 mm
Range of bending	U210°D90° R/L100°



VET-1335

Working length	3500 mm
Diameter of distal-end	12.8 mm
Diameter of instrument channel	3.7 mm
Range of bending	U/D180° R/L100°



Veterinary Endoscopic Accessories and Stent



Biopsy

- Disposable Biopsy Forceps
- Disposable Cytology Brush

Polypectomy

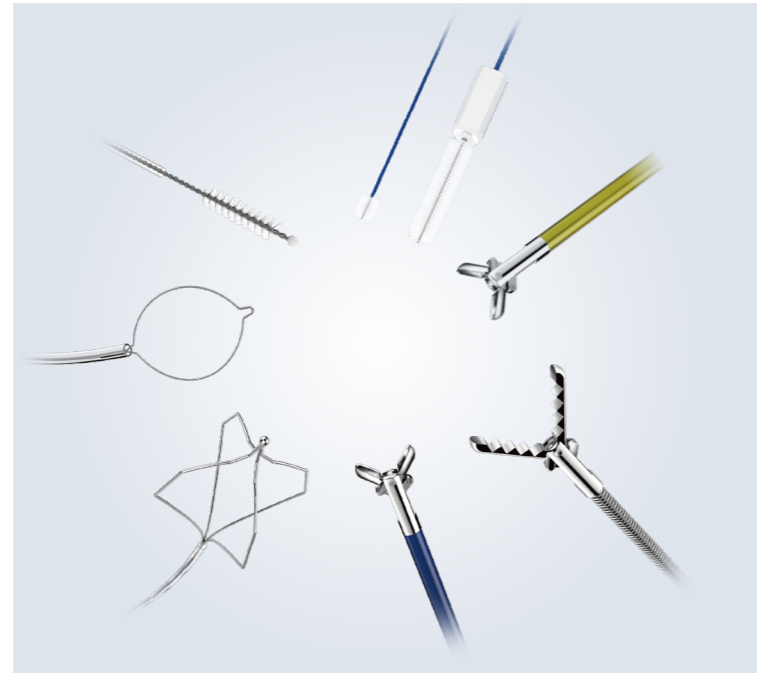
- Disposable Snare
- Disposable Hot Biopsy Forceps

Foreign Body Removal

- Disposable Grasping Forceps

Cleaning

- Disposable Cleaning Brush



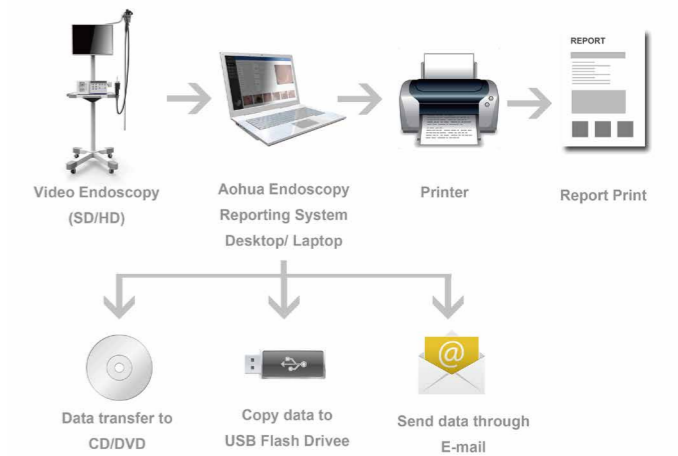
Stent

- Esophageal Stent
- Tracheal and Bronchial Stent
- Intestinal Canal Stent
- Individual Stent



Reporting System Software

- Video and picture recording;
- Patient Reporting multiple outlets and multi languages;
- DICOM compatible;
- Friendly installation and operation.



Medical Monitor & Mobile Trolley

Monitor

- 19 inch medical grade monitor
- It can restore medical image truly and accurately.
- High brightness, high contrast ratio and wide viewing angle

Mobile Trolley

- Medical Mobile trolley with small size and light weight, easy to install and move.

