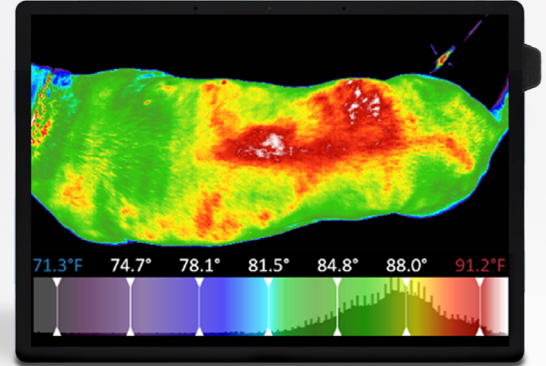


Real-time Physiological Screening

Easy as Snapping a Picture

The more you can see about the real-time condition of your patient, the better care you can provide. The more obvious you can make your findings to your pet-owners, the better compliance you'll get with your services and the more you'll be able to save them in the long run. Win-Win.

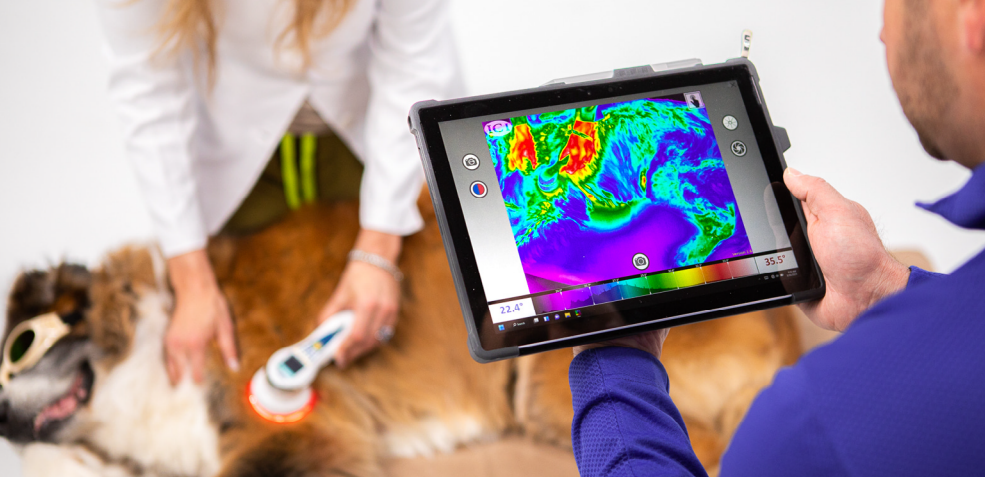


Practice Benefits

- Provide a road map for targeted diagnostics & treatments with laser therapy and other modalities
- Focus on client-centered care, and allow the pet-owner to be actively involved in the decision-making process with easy-to-interpret images and videos.
- Increase pet-owner compliance with easy-to-interpret follow-up exams to track progress & therapeutic results and strengthen the trust & confidence in your client relationships.

Patient Benefits

- Visualize & identify sites of inflammation, vasoconstriction, neurological deficiencies, as well as secondary and compensatory problems
- Quantitatively compare anatomy throughout your patient's body with objective measurement
- Qualitatively track the progress of therapeutic interventions against your patient's natural baseline symmetry



Specifications

Pixel Resolution:	640 x 512
Accuracy:	± 1 °C (± 1.8 °F) or ± 1%
Temperature Range:	-40 °C to 140 °C (-40 °F to 284 °F)
Spectral Band:	7 μm – 14 μm
Thermal Sensitivity (NETD):	< (20 mK) 0.02 °C at 30 °C (86 °F)
Frame Rate	60 Hz P-Series or 7.5 Hz S-Series
Shock/Vibration:	75 G/2 G
Dimensions:	211 mm x 303 mm x 54 mm (L x W x D ± 0.5 mm) (8.31" x 11.93" x 2.13" (L x W x H ± 0.02"))
Power:	12 V DC 2.58 A, < 36 W
Battery:	Lithium battery, built-in, rechargeable
Weight (without lens)	1660 g (3.66 lbs)
Video:	Radiometric IR and MP4 Visible
Video Format:	MP4, 1920 x 1080 @ 30 fps
Image Polarity:	Iron, White Hot, Black Hot, Rainbow Research, Rainbow Percentage
IP Rating	IP54 Internal non-uniformity correction (NUC)
Operating System	Windows 10
Processor:	10th Gen Intel Core i5
Storage:	128 GB
RAM:	8 GB
Screen size:	12.3"
Screen resolution:	2736 x 1824, 3:2
Touch:	multi-touch enabled
Visible cameras:	rear facing 8 MP at 3264 x 2448, front facing 5 MP at 2560 x 1920
Wi-Fi	802.11ax/ac/n/g/b/a
Bluetooth®	Wireless 5.0

Features

Medically Calibrated

- With the ability to detect changes as subtle as 0.02 °C.
- 50x Temperature Resolution.

327,680 Pixels

- 640x512 detector array captures maximum anatomy in each shot.
- 400% Spatial Resolution.

Real-Time Analysis

- Built-in, intuitive software allows the drawing of Regions-of-Interest with statistics and comparison tools.

Communication Tool

- Clear way to educate patients on potential issues AND suggested path of care.

Quick Interpretation

- Identify primary sites of inflammation, vasoconstriction, neurological deficiencies, as well as secondary and compensatory problems.

Mobile & Ergonomic

- Surface 8 tablet with kick-stand, hand-strap, smart pen, Wifi, & Bluetooth, all < 4 lbs for easy operation in any room of the clinic.



Learn more

Call: (440) 542-0761

Visit: [Vet.multiradiance.com](https://vet.multiradiance.com)

