



**DENTALAIRE**

Meeting and Exceeding the Needs of Veterinary Dentistry since 1988

**Dental X-ray  
Generator**

# DentalAire DC

Incorporating state-of-the-art technology



**Dental X-ray  
Generator**

# Dentalaire DC

Incorporating state-of-the-art technology

**Dental X-ray  
Generator**



## Features & Benefits

The Dentalaire DC stands out from the competition, thanks to the full-size LCD display, large easy to distinguish buttons and ergonomic modern design. You can select the kV and time settings of your choice or choose from the pre-programmed techniques.

The positioning arm is constructed entirely of aluminum using the highest international grade tolerances, frictionless joints and a precision braking system to ensure the tube rests where you place it.

- Graphical user interface allows for simple system settings
- Hi-frequency DC technology provides shorter exposure times and reduced dose
- Adjustable kVp for maximum contrast adjustment
- Veterinary specific selections including exotic and extremity
- 0.4 mm focal spot (smallest in the industry) provides higher resolution images
- Large LCD with adjustable brightness and contrast
- Standard, short or long extension arm option to meet your requirements
- Long reach arm with frictionless joints and a precision braking system
- Extra-long reach for mobile version with total inside reach of 54"
- Available in mobile or wall mount version
- Optional wireless exposure button
- Optional onsite installation

[www.Dentalaire.com](http://www.Dentalaire.com) | 800.866.6881

Dentalaire Products | 17742 Mitchell North, Suite B Irvine CA 92614

[info@dentalaire.com](mailto:info@dentalaire.com)





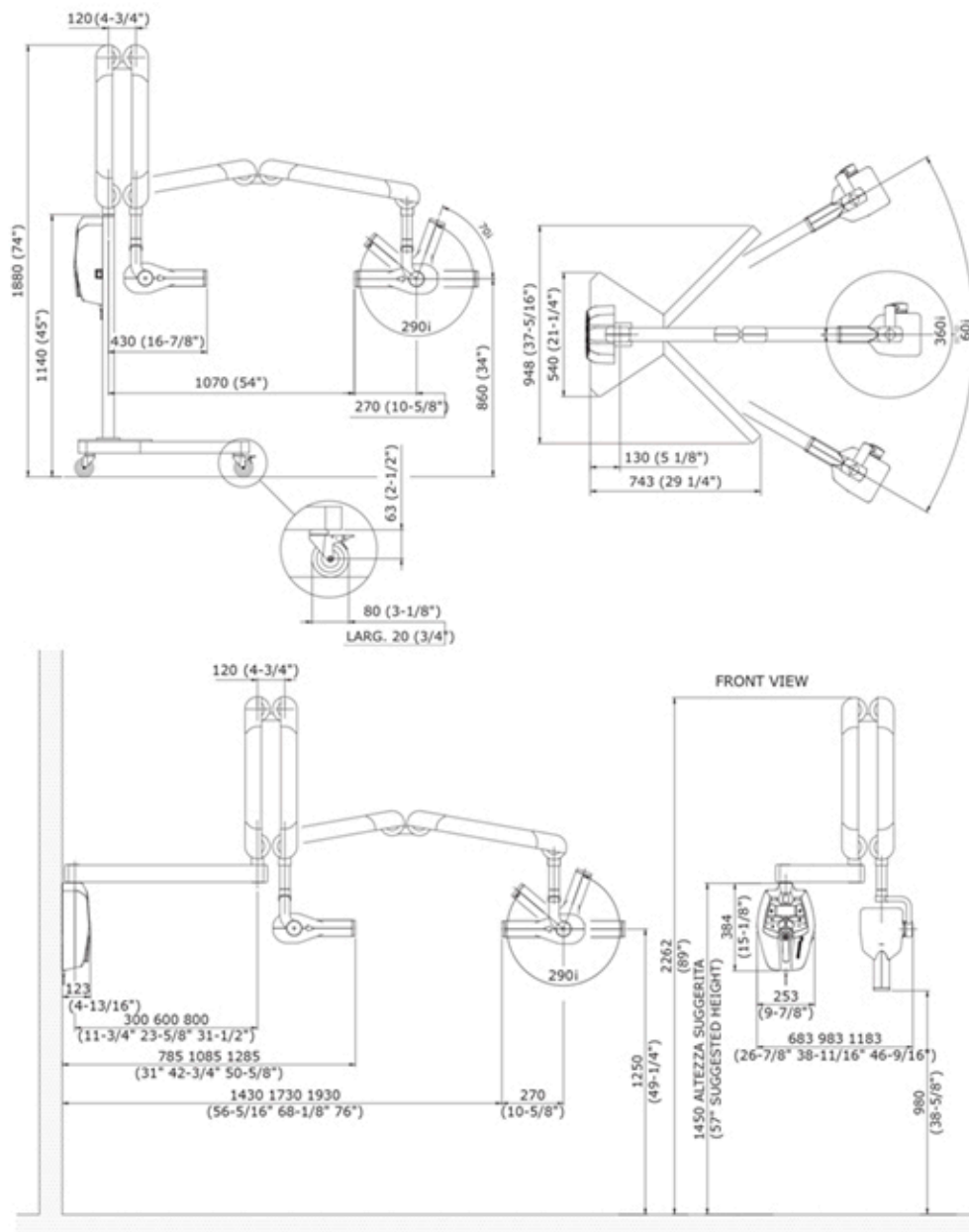
# DENTALAIRE

Meeting and Exceeding the Needs of Veterinary Dentistry since 1988

## Dental X-ray Generator

### Technical Spec's

- Power Supply: 110-240 VAC +/- 10% 50-60 Hz
- X-ray Tube Head: High frequency (DC)  
60, 65 or 70 kV, 6 mA
- Exposure Time: 0.01 to 2 seconds
- Cone Length: 20 cm (8 inches)
- Minimum Inherent Filtration: 3.02 mm Al eq. @ 70 kV
- Focal Spot: 0.4 mm (IEC 336)
- Duty Cycle: 1:30
- Shipping Weight: 73 lb (wall mount) - 145 lb (mobile)
- Warranty: 2 years, limited



[www.Dentalaire.com](http://www.Dentalaire.com) | 800.866.6881

Dentalaire Products | 17742 Mitchell North, Suite B Irvine CA 92614

[info@dentalaire.com](mailto:info@dentalaire.com)