

## Enhanced Multi-Parameter Portable Touch Screen Veterinary Monitor

### Veterinary Multi-Parameter Vital Sign Monitor

The BM7Vet boasts optional dual IBP modules, EtCO<sub>2</sub> and anesthetic gas module, on top of standard ECG, Respiration, NIBP, Dual Temp and SpO<sub>2</sub>. Its 12.1" wide color monitor displays all the vital signs that you want in different colors. Built-in printer offers documentation of all measured values as well as up to 3 waveforms of information. Alarms and settings are easily adjustable and are retained after turning off the power.

# BM7Vet

EtCO<sub>2</sub> Ready

### FEATURES

#### Superior Advantages

- ECG, SpO<sub>2</sub>, NIBP, Respiration and Temperature  
Includes: temperature, transfectance SpO<sub>2</sub>, and esophageal probes\*
- 12.1" color TFT LCD monitor (touch screen)
- Individual sweep speed setting for each parameter
- Multiple display modes
- Remembers your settings

#### Extendible Parameters

- Mainstream/sidestream CO<sub>2</sub>  
(can add plug and play main or sidestream EtCO<sub>2</sub> at any time)
- 2 IBP
- Mainstream/sidestream anesthetic gas

#### Enhanced Data Management

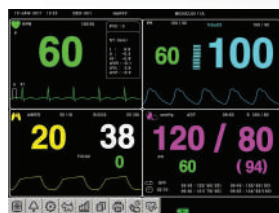
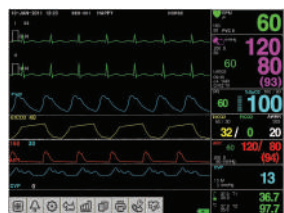
- 7 days of trend data stored
- 20 cases × 10 sec alarm waveform stored

#### High-Performance Measurement

- ST level, PVC count real-time display
- 13 kinds of arrhythmia analysis
- Very low perfusion SpO<sub>2</sub> measurement

#### Transportable

- Li-ion rechargeable battery allows cordless use for up to 2 hours (optional battery provides up to 4 hours)



# SPECIFICATIONS

## General >>>

<b>Monitor Performance Specifications</b>	
<b>Display, Resolution</b>	12.1" color TFT LCD, 800 x 600 pixels
<b>Dimension, Weight</b>	322 (W) x 250 (H) x 224.8 (D) mm, Approx. 4.5 Kg
<b>Trace</b>	6 waveforms: 2 ECG, SpO <sub>2</sub> , RR or EtCO <sub>2</sub> , 2 IBP Sweep speed: 6.25, 12.5, 25, 50 mm/sec
<b>Indicators</b>	Categorized alarms (3 priority levels) Visual alarm lamp handle Heart beat tone SpO <sub>2</sub> pulse pitch tone Battery status, external power LED Touch screen, rotary knob
<b>Interfaces</b>	DC input connector: 18 VDC, 2.5 A Defibrillator Sync. Output: - Signal level: 0 to 5 V pulse - Pulse width: 100 ± 10 ms LAN digital output for transferring data Nurse call system connection: - 0.3 A at 125 VAC - 1 A at 24 VAC DC output: 5 VDC, 1 A Max USB barcode reader USB memory data storage/software upgrade
<b>Battery</b>	Rechargeable Li-ion battery, 2 hours for continuous operation (option: 4 hours, total, using additional battery)
<b>Thermal Printer</b>	Speed: 25, 50 mm/sec, Paper width: 58 mm
<b>Data Storage</b>	168 hour trends 20 cases of 10 sec alarm waveform
<b>Language</b>	English, French, Spanish, Italian, German, Chinese, Russian, Czech, Polish, Turkish, Romanian, Portuguese, Bulgarian, Korean, Hungarian

<b>Accessory</b>	
<b>Standard Accessories</b>	3 Lead vet ECG cable 1ea NIBP extension tube (3m) 1ea NIBP vet cuff neonate disposable #1 - #5 1 set NIBP vet cuff infant reusable 1ea SpO <sub>2</sub> extension cable (2m) 1ea Esophageal ECG probe with temperature 1ea Extension cable for esophageal probe 1ea Transflectance SpO <sub>2</sub> probe 1ea Temperature probe (rectal/esophageal) 1ea Reusable multisite SpO <sub>2</sub> probe 1ea B-Link automated record keeping software 1ea DC adapter (18 VDC, 2.5A) 1 set
<b>Optional Accessories</b>	5 Lead vet ECG cable Temperature probe (skin) IBP disposable pressure transducer kit IBP reusable pressure transducer kit Mainstream CO <sub>2</sub> airway adapter set Sidestream CO <sub>2</sub> airway adapter set

<b>Optional Module</b>	
	Mainstream CO <sub>2</sub> module (sensor) Sidestream CO <sub>2</sub> module (sensor) Anesthetic gas / O <sub>2</sub> module (sensor)

Specifications can be changed without prior notification. You may have distortion or signal noise when you use nonstandard or other brands' accessories. We strongly recommend you use only the authorized accessories which we supply.



South Korea: Bionet Co., Ltd. [www.ebionet.com](http://www.ebionet.com)  
Tel: +82-70-7585-6418 (Int'l) / +82-2-6300-6483 (Domestic)  
E-mail: sales@ebionet.com (Int'l) / yunms@ebionet.com (Domestic)

China: Bionet China, Inc. (中国佰奈特)  
Tel: +86-10-8476-3601  
E-mail: ayw1969@ebionet.com [www.ebionet.com.cn](http://www.ebionet.com.cn)

North America (U.S.A): Bionet America, Inc.  
Tel: +1-714-734-1760  
E-mail: sales@BionetUS.com [www.BionetUS.com](http://www.BionetUS.com)

Latin America: Bionet Latin America, Inc.  
Tel: +1-949-800-9585  
E-mail: jayshim@ebionet.com [www.ebionet.com](http://www.ebionet.com)

## Performance >>>

<b>ECG</b>	
<b>Lead Type</b>	3-lead, 5-lead
<b>Lead Selection</b>	3-lead: I, II, III 5-lead: I, II, III, aVR, aVL, aVF, V
<b>ECG Waveform</b>	3-lead: 1 Channel 5-lead: 1/2/7 Channel
<b>Heart Rate Range</b>	Horse, Dog: 30 - 300 BPM Puppy, Cat: 30 - 350 BPM
<b>Heart Rate Accuracy</b>	±1 bpm or ±1%, whichever is greater
<b>Sweep Speed</b>	6.25, 12.5, 25, 50 mm/sec
<b>Filter</b>	Diagnosis: 0.05 - 150 Hz Monitoring: 0.5 - 40 Hz Moderate: 0.5 - 25 Hz Maximum: 5 - 25 Hz
<b>S-T Segment Detection Range</b>	-2.0 to 2.0 mV
<b>Arrhythmia Analysis</b>	Asystole, VTACH, V-fib, bigeminy, accent, couplet, irregular, pause, PVC, ront, trigeminy, VBRADY, short run
<b>Pacemaker Detection Mode</b>	Indicator on waveform display (user selectable)
<b>Protection</b>	Against electrosurgical interference and defibrillation
<b>Respiration</b>	
<b>Method</b>	Thoracic impedance
<b>Channel Selection</b>	RA-LA or RA-LL
<b>Measurement Range</b>	5 - 120 breaths per minute
<b>Accuracy</b>	±1 breath per minute
<b>Apnea Alarm</b>	Yes
<b>SpO<sub>2</sub></b>	
<b>Saturation Range</b>	0 to 100%
<b>Saturation Accuracy</b>	70 to 100% ±2 digits, 0 to 69% unspecified
<b>Pulse Rate Range</b>	30 to 254 BPM
<b>Pulse Rate Accuracy</b>	±2
<b>NIBP</b>	
<b>Method</b>	Oscillometric
<b>Operation Mode</b>	Manual/Automatic/Continuous
<b>Pressure Range</b>	0 - 300 mmHg (±3 mmHg)
<b>Measurement Range</b>	Systolic: 40 - 265 mmHg MAP: 27 - 222 mmHg Diastolic: 20 - 200 mmHg
<b>Pulse Rate Range</b>	25 - 300 BPM
<b>Temperature</b>	
<b>Channels</b>	2
<b>Measurement Range</b>	0 to 50 °C (32 to 122 °F)
<b>Accuracy</b>	±0.1°C
<b>Compatibility</b>	YSI Series 400 temperature probes
<b>IBP (option)</b>	
<b>Channels</b>	2
<b>Measurement Range</b>	-50 to 300 mmHg
<b>Accuracy</b>	<100 mmHg: ±1 mmHg >=100 mmHg: ±1% of reading
<b>Pulse Rate Measurement Range</b>	0 to 300 BPM
<b>Zero Balancing</b>	Range: ±200 mmHg Accuracy: ±1 mmHg Drift: ±1 mmHg over 24 hours
<b>Transducer Sensitivity</b>	5 µV/V/mmHg
<b>Mainstream CO<sub>2</sub>, Sidestream CO<sub>2</sub> - Respironics (option)</b>	
<b>Measurement Range</b>	0 to 150 mmHg, 0 to 19%
<b>Accuracy</b>	0 - 40 mmHg ±2 mmHg, 41 - 70 mmHg ±5% of reading, 71 - 100 mmHg ±8% of reading, 101 - 150 mmHg ±10% of reading
<b>Respiration Rate</b>	0 - 150 BPM (Mainstream CO <sub>2</sub> ) 2 - 150 BPM (Sidestream CO <sub>2</sub> )
<b>Respiration Accuracy</b>	±1 breath per minute
<b>Anesthetic Gas - Masimo (option)</b>	
<b>Method</b>	Infra-red absorption characteristic
<b>Mainstream</b>	IRMA AX+
<b>Sidestream</b>	ISA OR+ / AX+
<b>Gas</b>	IRMA AX+: CO <sub>2</sub> , N <sub>2</sub> O, Des, Iso, Enf, Hal, Sev ISA AX+: CO <sub>2</sub> , N <sub>2</sub> O, Des, Iso, Enf, Hal, Sev ISA OR+: O <sub>2</sub> , CO <sub>2</sub> , N <sub>2</sub> O, Des, Iso, Enf, Hal, Sev
<b>Warm-up time</b>	Mainstream (IRMA AX+) -Iso accuracy mode: 45s -Full accuracy mode: 60s Sidestream (ISA OR+ / AX+): <20s
<b>Sample flow rate (for ISA OR+ / AX+)</b>	50 ± 10 ml/min
<b>Measuring Range</b>	CO <sub>2</sub> : 0 ~ 15% N <sub>2</sub> O: 0 ~ 100% Hal/Iso/Enf: 0 ~ 8% Sev: 0 ~ 10% Des: 0 ~ 22% O <sub>2</sub> : 0 ~ 100% (ISA OR+)
<b>Respiratory Rate</b>	0 ~ 150 BPM ± 1BPM

Europe: MGB Endoskopische Geräte GmbH Berlin (Germany)  
Tel: +49-30-6392-7000  
E-mail: sales@mgb-berlin.de [www.mgb-berlin.de](http://www.mgb-berlin.de)